

# THE COMPLETE PAPER CRAFT SET

Downloaded from:  
<http://paperartgadgets.blogspot.com>  
<http://sonicscapejun.blogspot.com>

2: Halo 3 Edition 360 retail box

3: Halo 3 Legendary Edition retail box



1: Halo 3 Edition Xbox 360

4: Helmet stand +



5: DannifoodYless' paper helmet (scaled to stand)



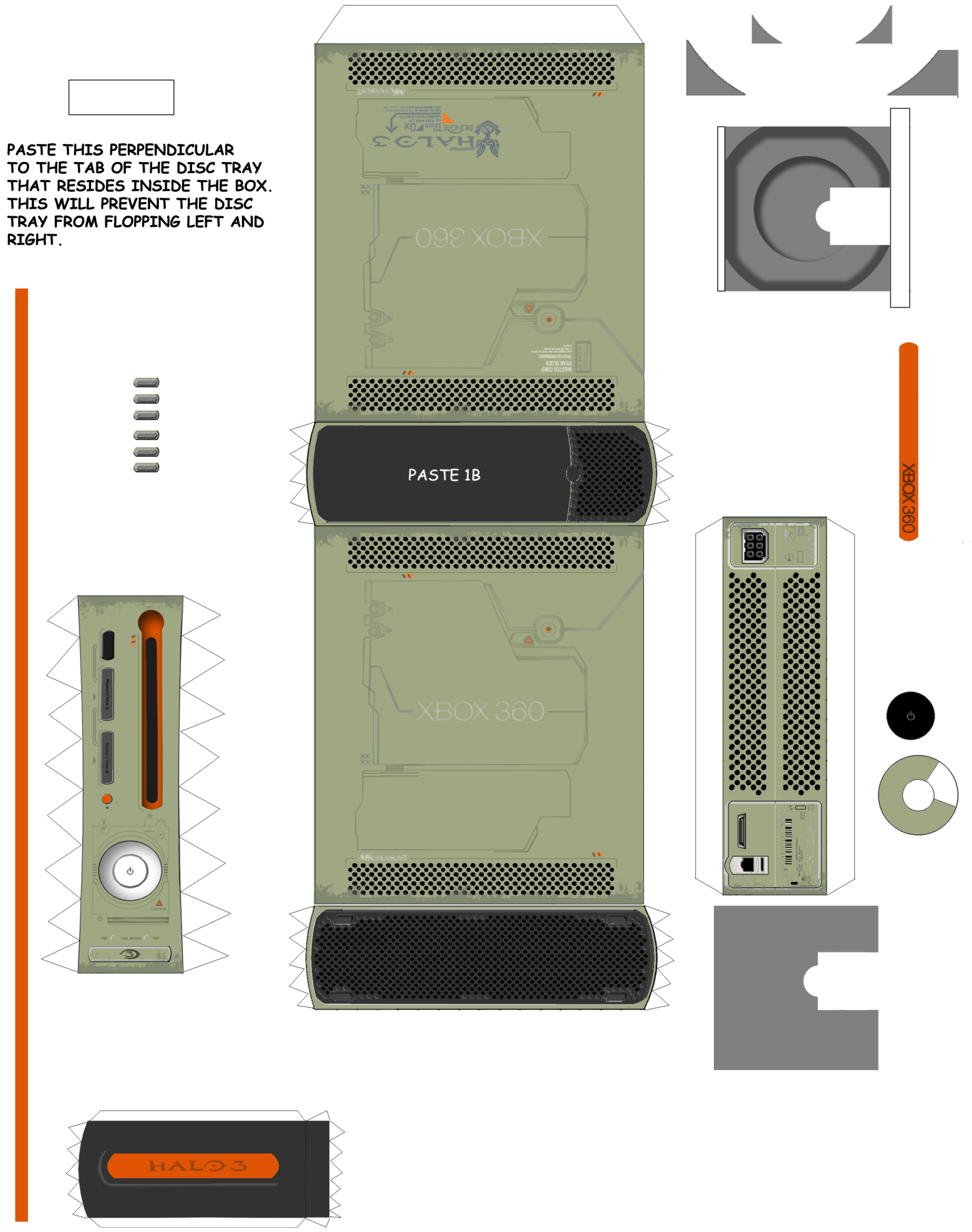
↑  
All models in miniature scale

Helmet stand by BradYds; Xbox 360 and boxes by Sonicscape; Helmet by DannifoodYless

**DISCLAIMER:** All models shown are not official products, nor are they endorsed by Microsoft or Bungie. These models are created purely, as fan-based projects and not meant for profit of any kind. It is forbidden to sell, copy, modify, reproduce or distribute these models without prior permission from the authors. These models contains portions which are trademarks or registered trademarks of Microsoft and Bungie. Microsoft(R), Xbox 360(R), Bungie (R), Halo 3(R) are registered trademarks of Microsoft corporation and Bungie. Should there be any unhappiness with regards to the use of trademarks, please do not hesitate to contact.

DISCLAIMER: This model is not an official product of, or endorsed by Microsoft. It is not meant for profit of any kind and represents fan-based art work. It is not to be sold, reproduced, distributed, copied or modified without permission from its creator. This material contains portions which are trademarks or registered trademarks of Microsoft corporation. Microsoft (R) and Xbox 360 (R) are registered trademarks of Microsoft Corporation. All logos are used with artistic intent, solely for the purpose of recreating lifelikeness. This page is to be printed on 120-140 gsm thick paper.

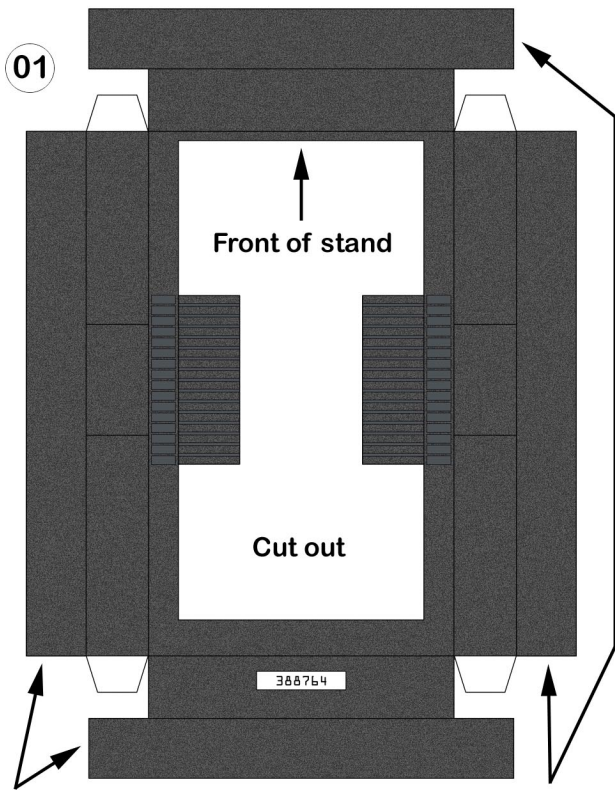
PASTE THIS PERPENDICULAR TO THE TAB OF THE DISC TRAY THAT RESIDES INSIDE THE BOX. THIS WILL PREVENT THE DISC TRAY FROM FLOPPING LEFT AND RIGHT.





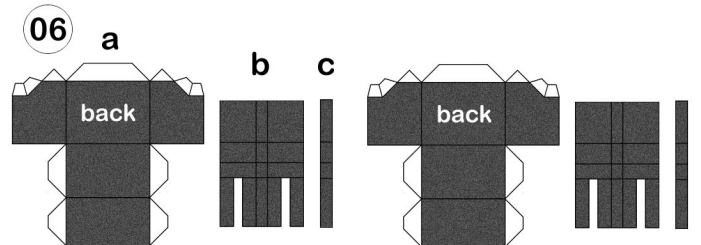
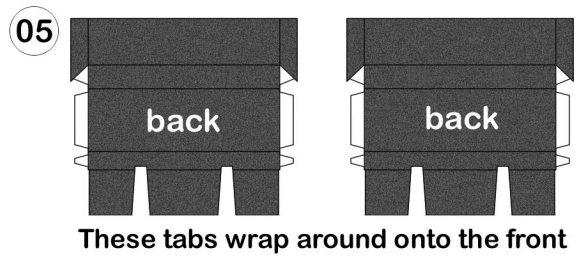
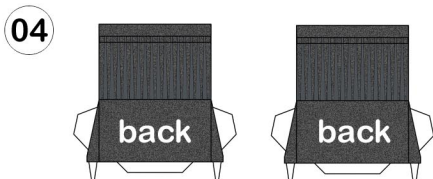
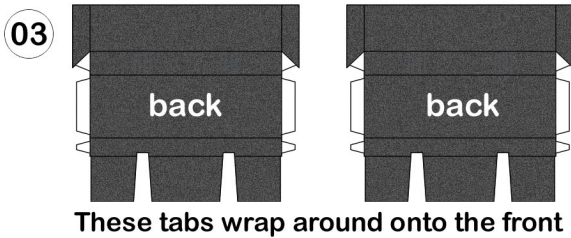
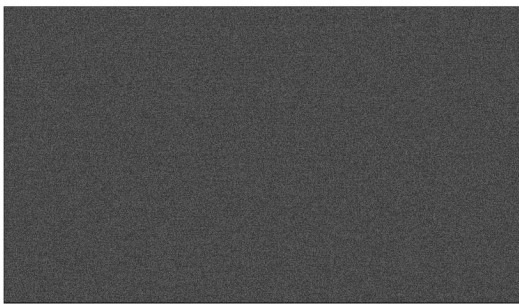




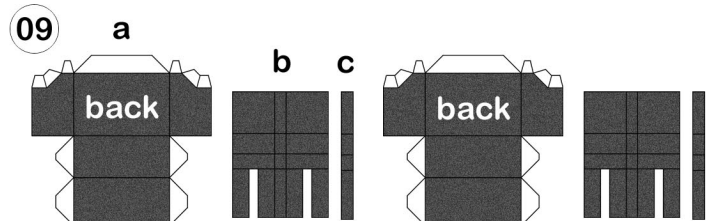
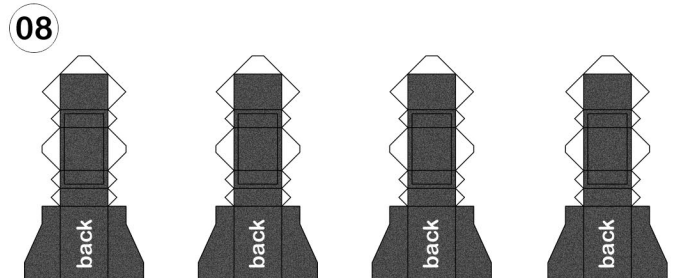
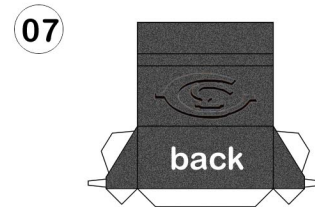


All 4 of these fold out to form base for other pieces

02 This fills the hole you cut in 01



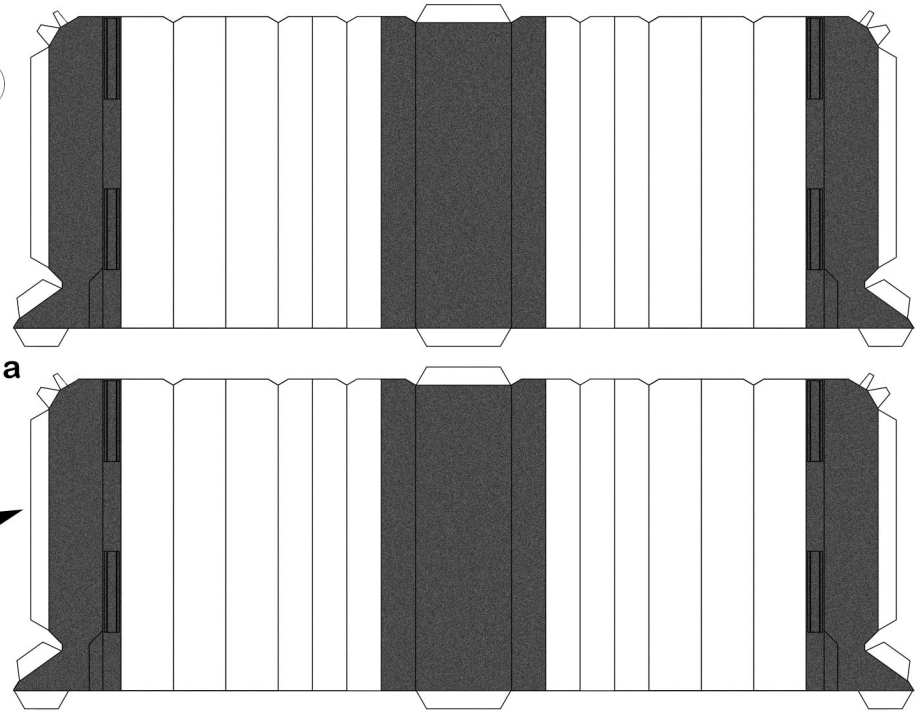
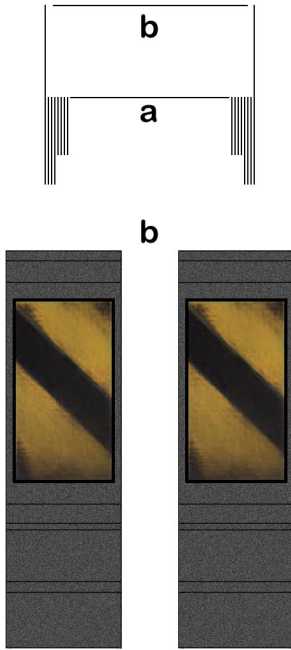
06a forms a base, b is the top (it should hang out over the back with the bottom section overlapping the front), c runs down the middle of b



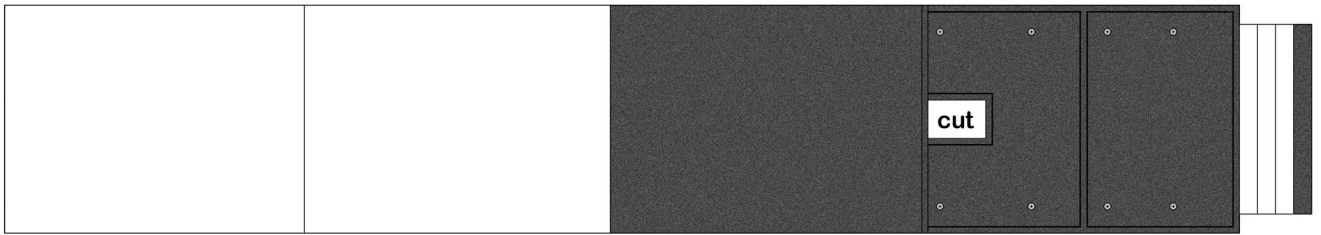
09a forms a base, b is the top (it should hang out over the back with the bottom section overlapping the front), c runs down the middle of b

The center white areas fanfold to form the thickness of the walls. Top view should be similar to this:

10

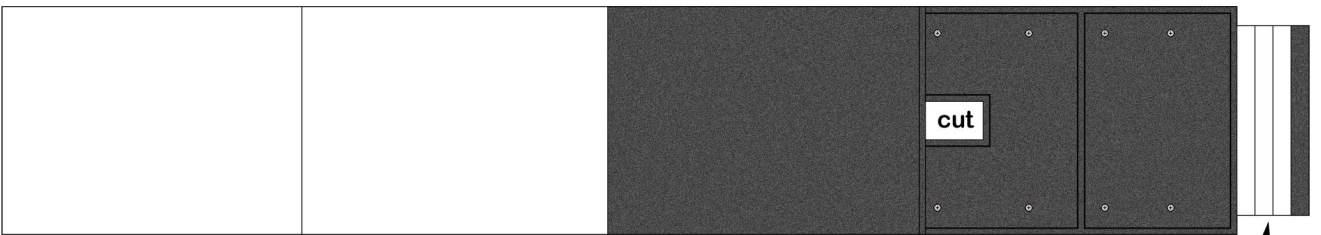


Folds on 10b should be made to follow contour on front of a.



11

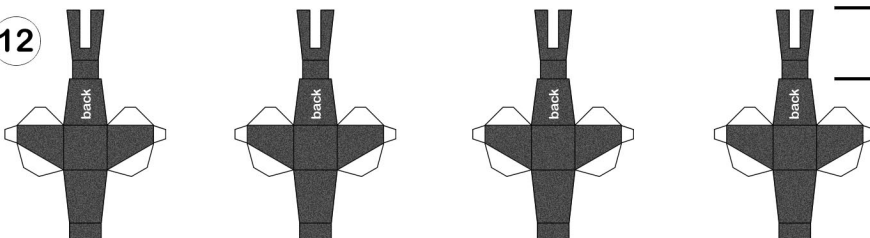
Do not remove 'cut' sections until wall is complete.



2 white sections here should be folded to end up between two textured sections.

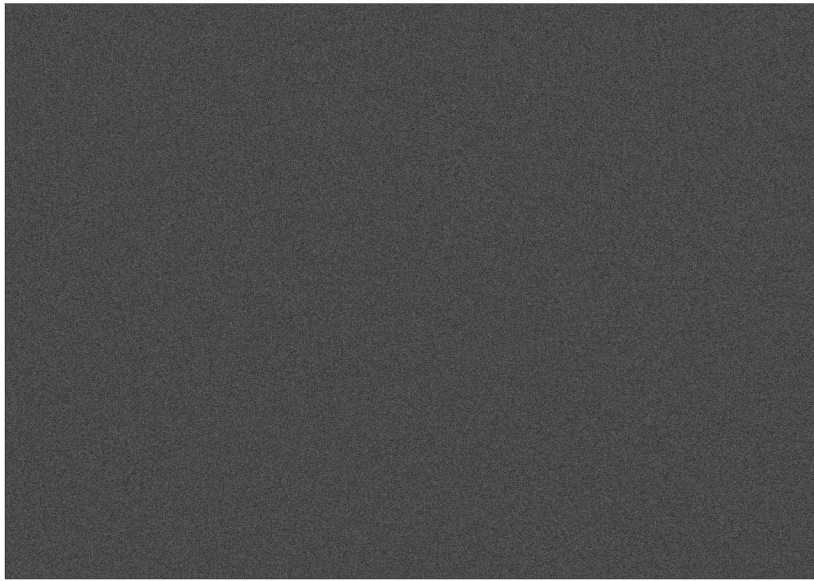
3 white sections here should be fanfolded to leave textured section on the outside.

12

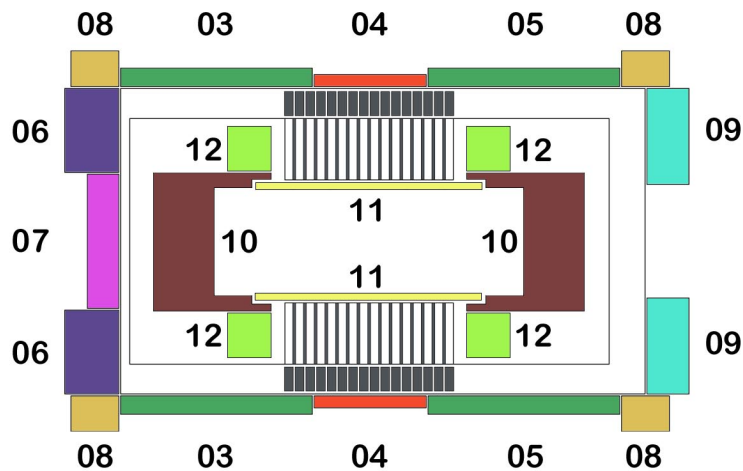


These wrap around onto the top and front.

13



Glue this piece to the bottom of the stand last. Then trim excess paper from edges of pieces 3-9.



The parts are numbered in the order they need to be attached to the base. The tower (10 & 11) should be assembled before combining with the base. The tower supports (12) should then be added.